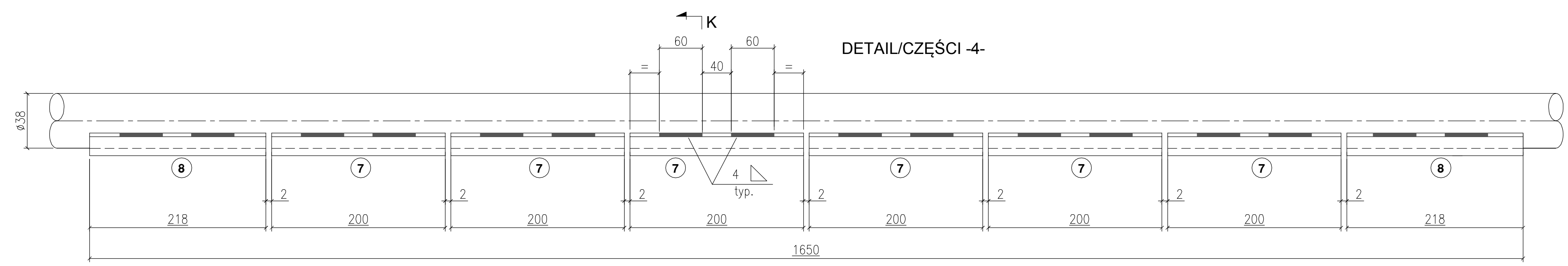
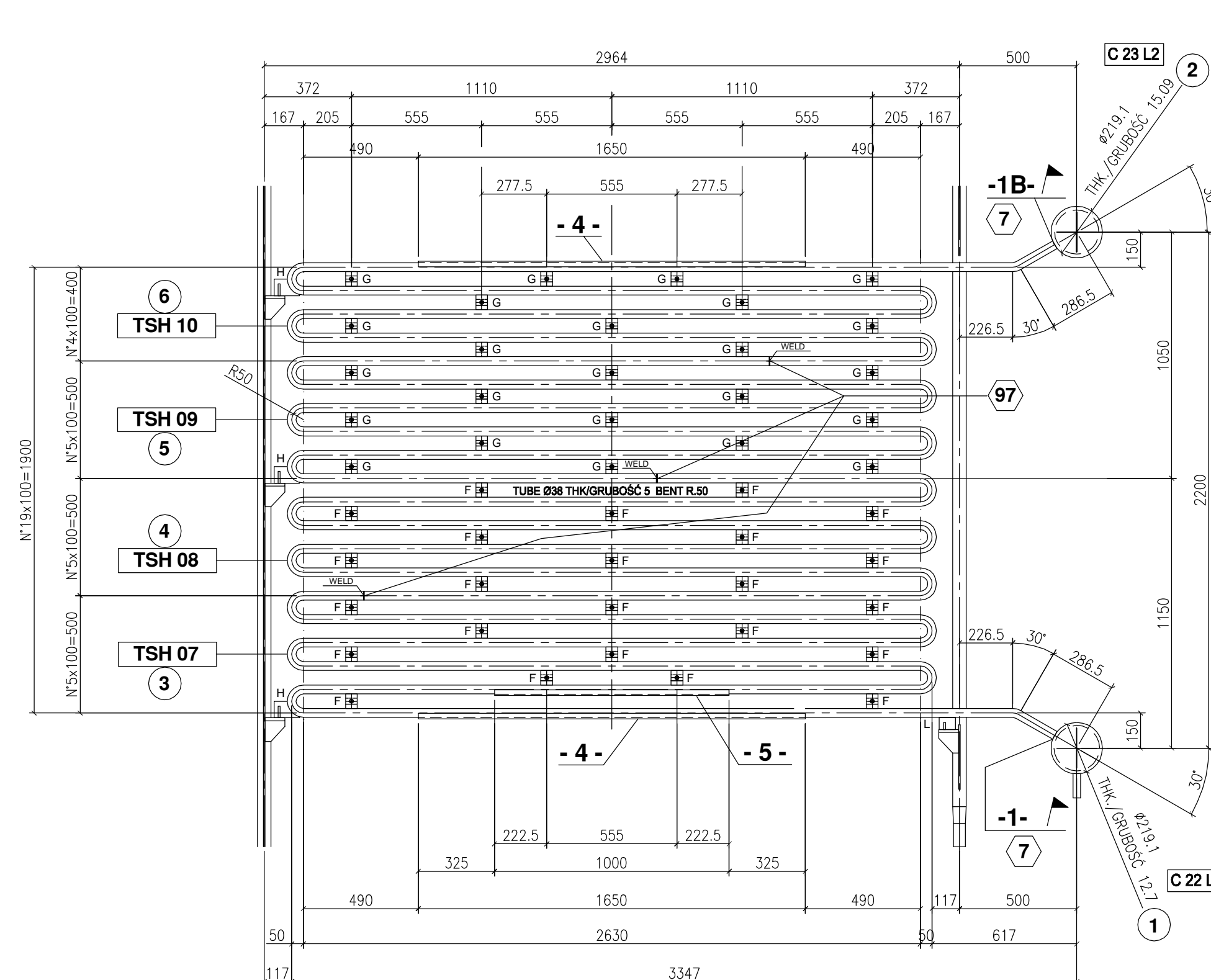
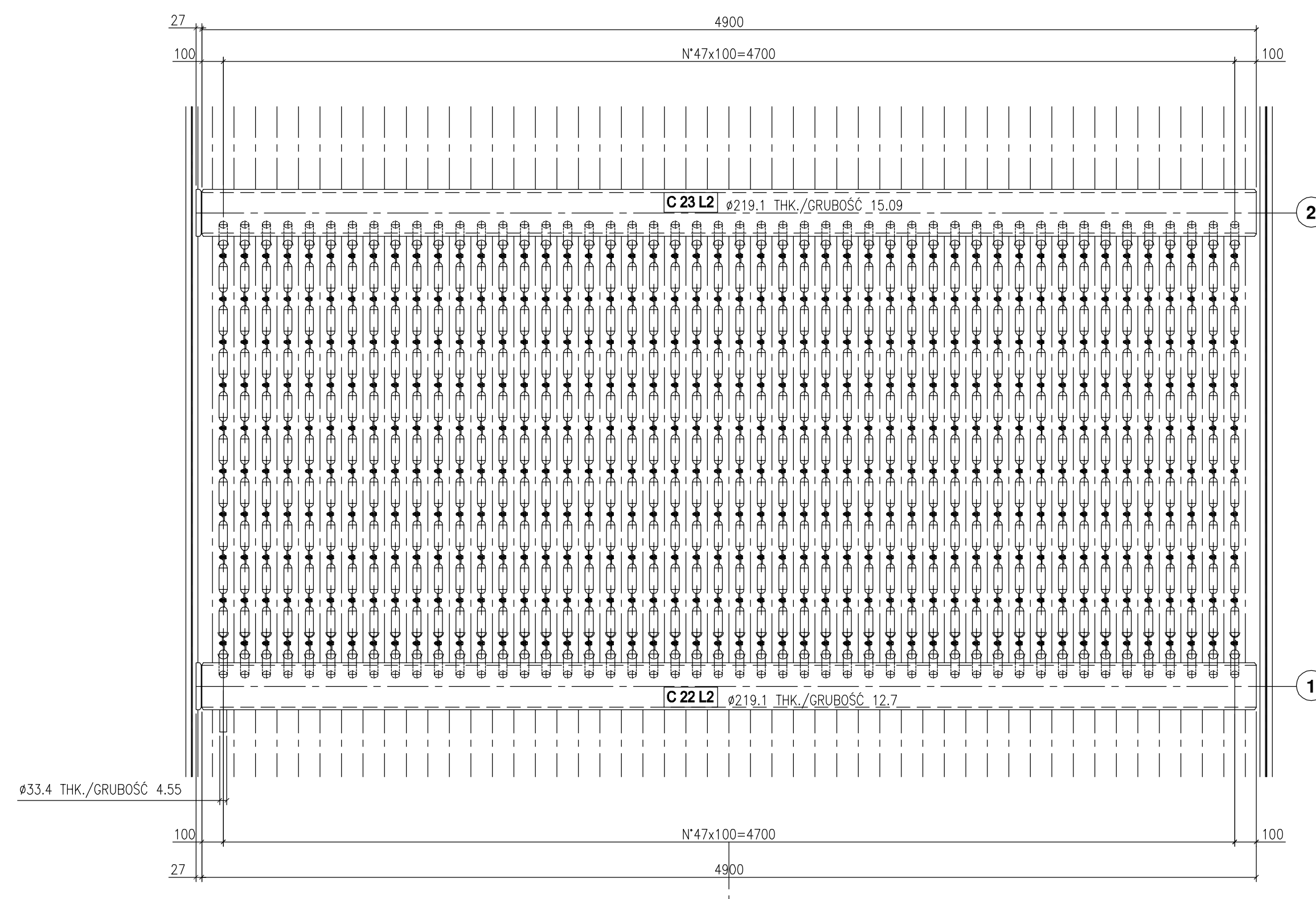
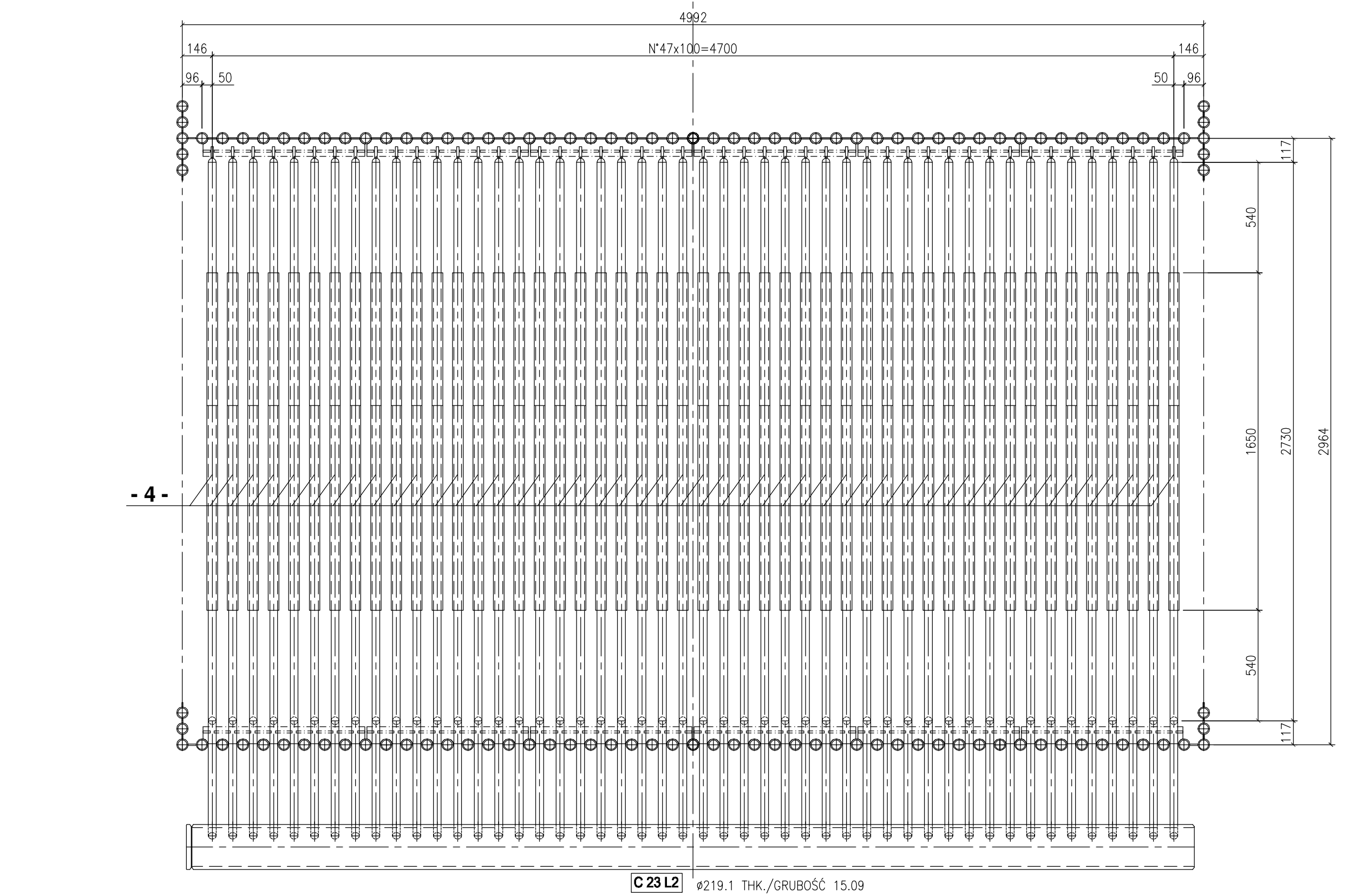
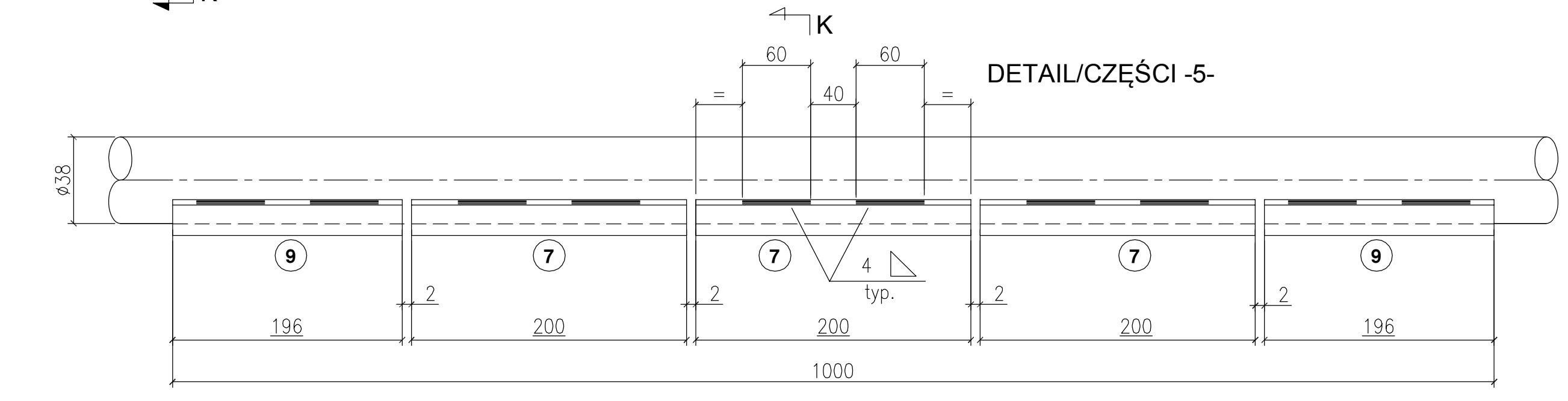
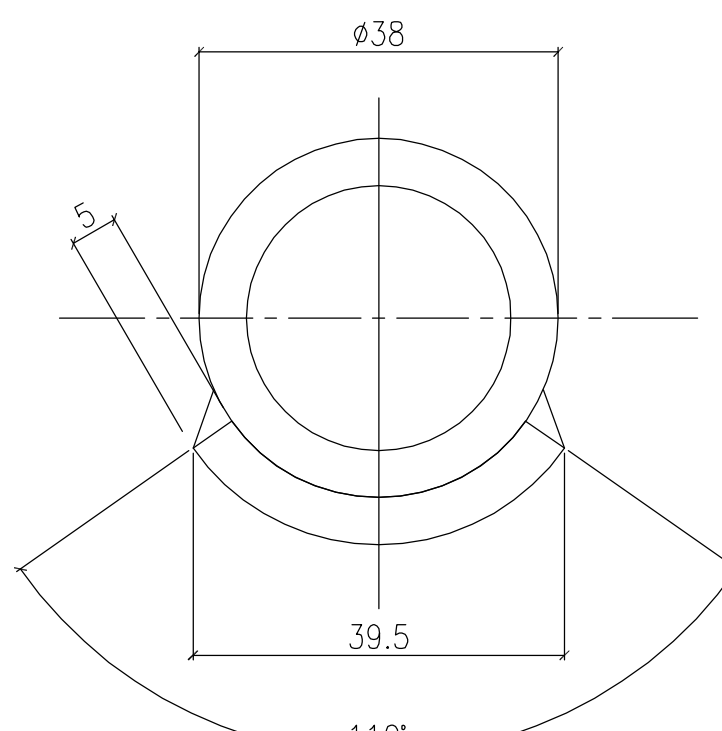


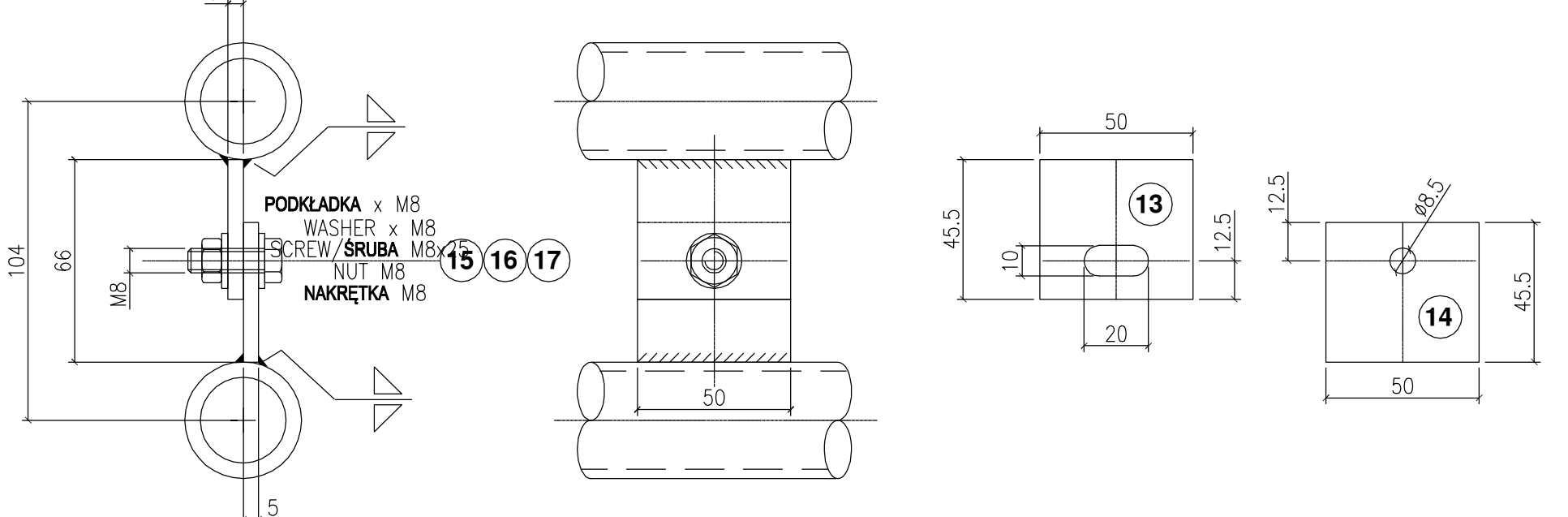
SH2 L2



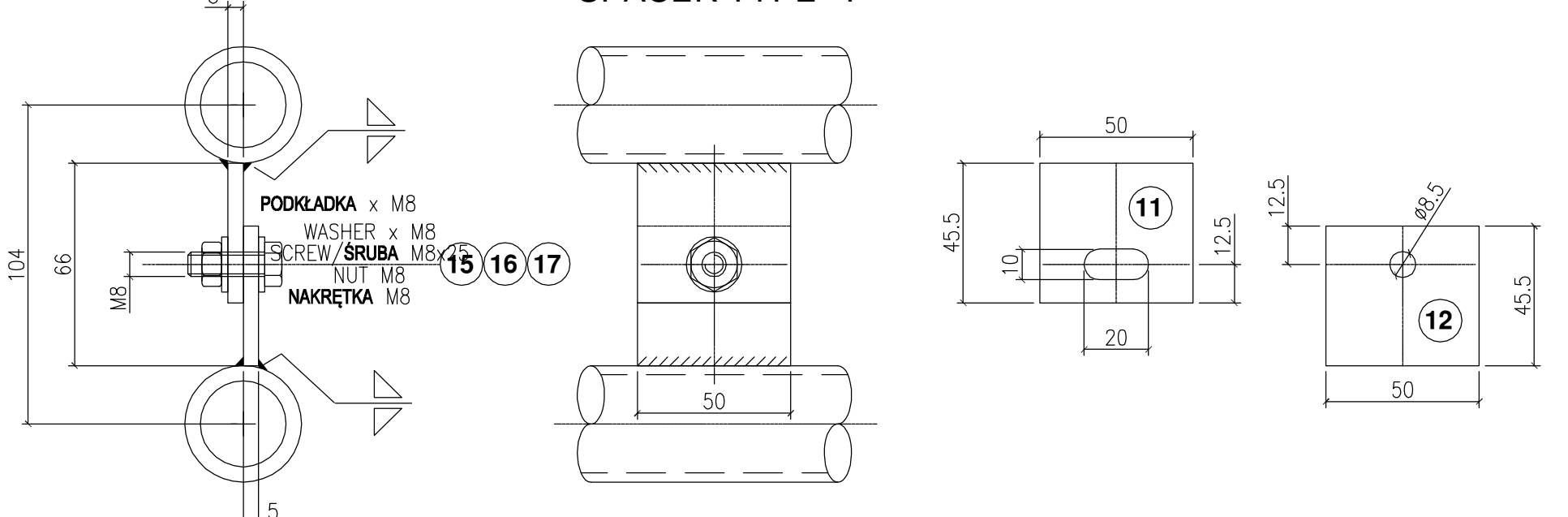
SEKCYJA K-K SECTION K-K



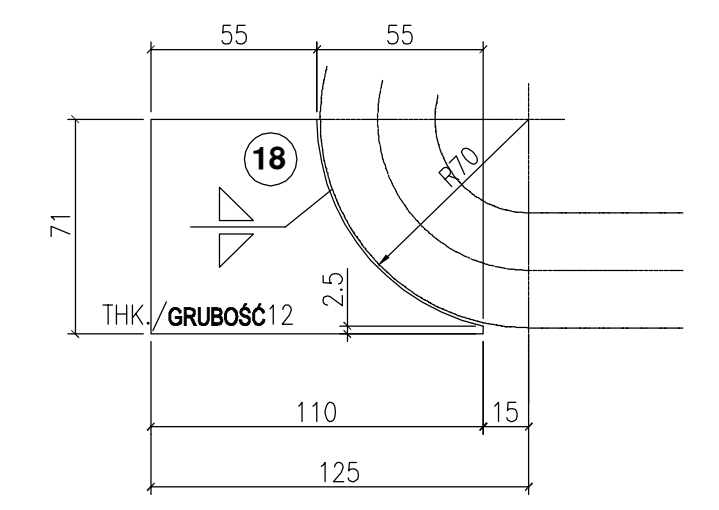
PIERŚCIEN ODLEGŁOŚCIOWY NA G SPACER TYPE G



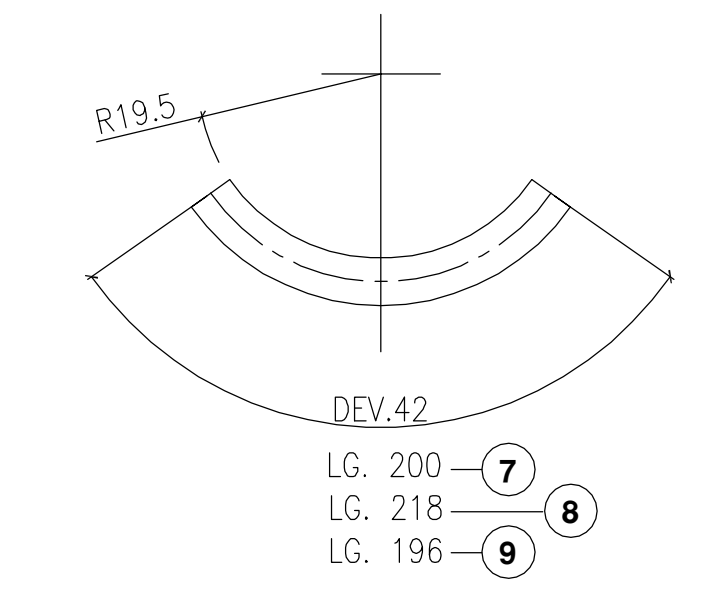
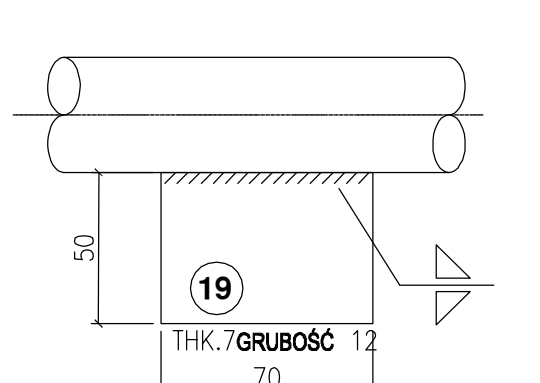
PIERŚCIEN ODLEGŁOŚCIOWY NA F SPACER TYPE F



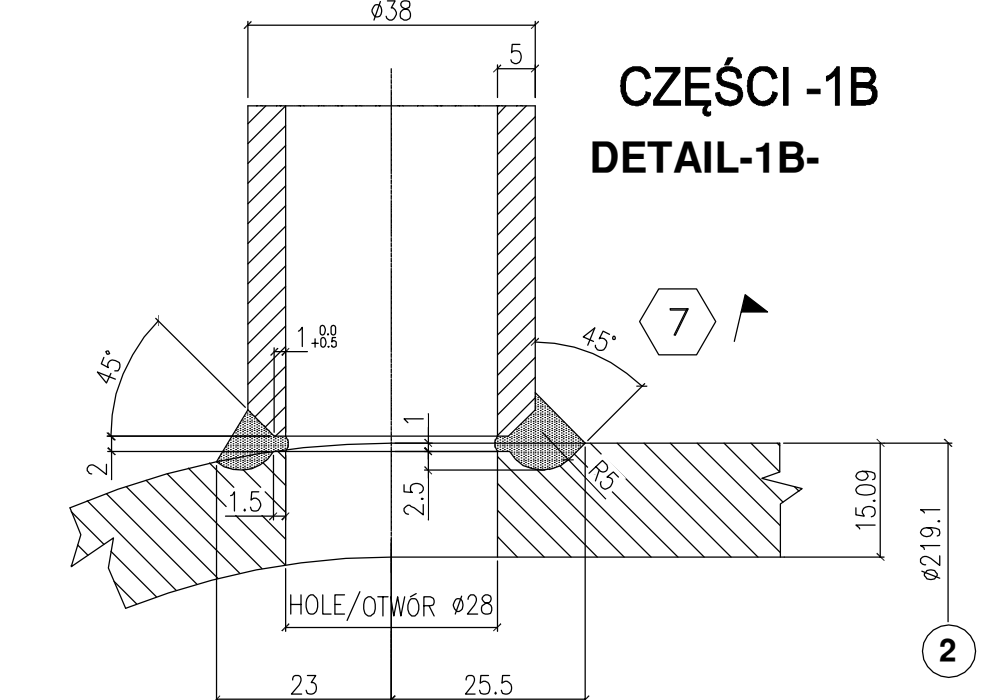
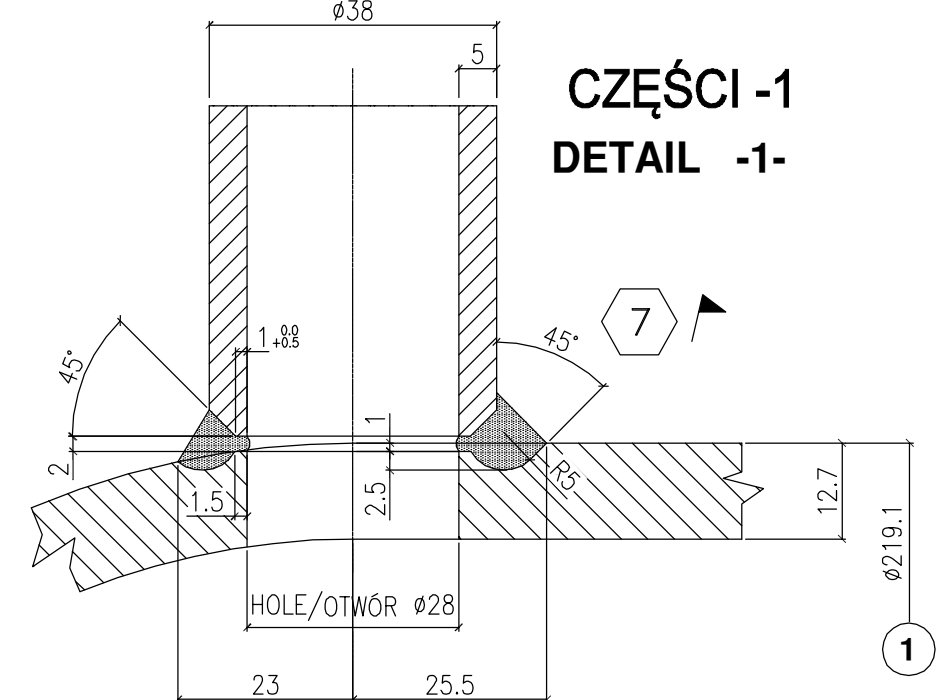
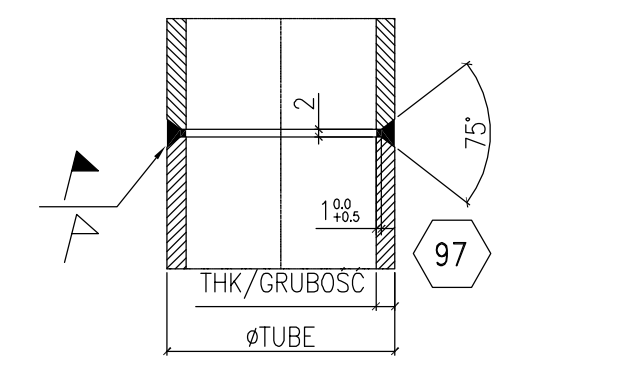
SUPPORT TYPE H



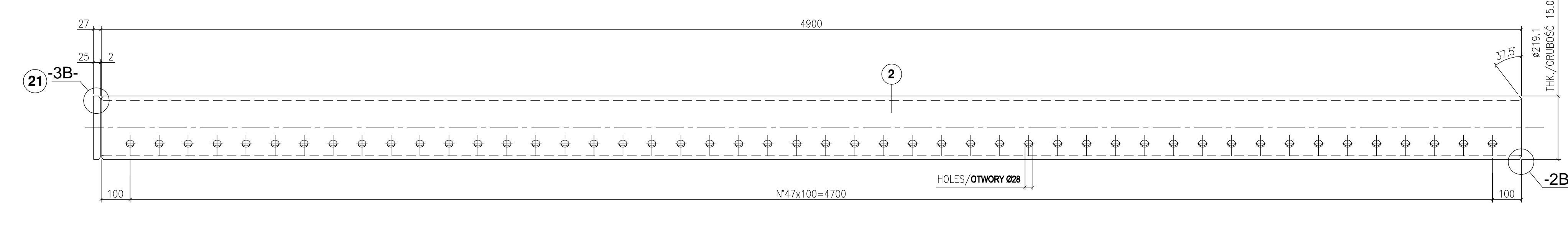
SUPPORT TYPE L



TYP. BUTT WELD



DRILLING HEADER DETAIL C 23 L2



DRILLING HEADER DETAIL C 22 L2

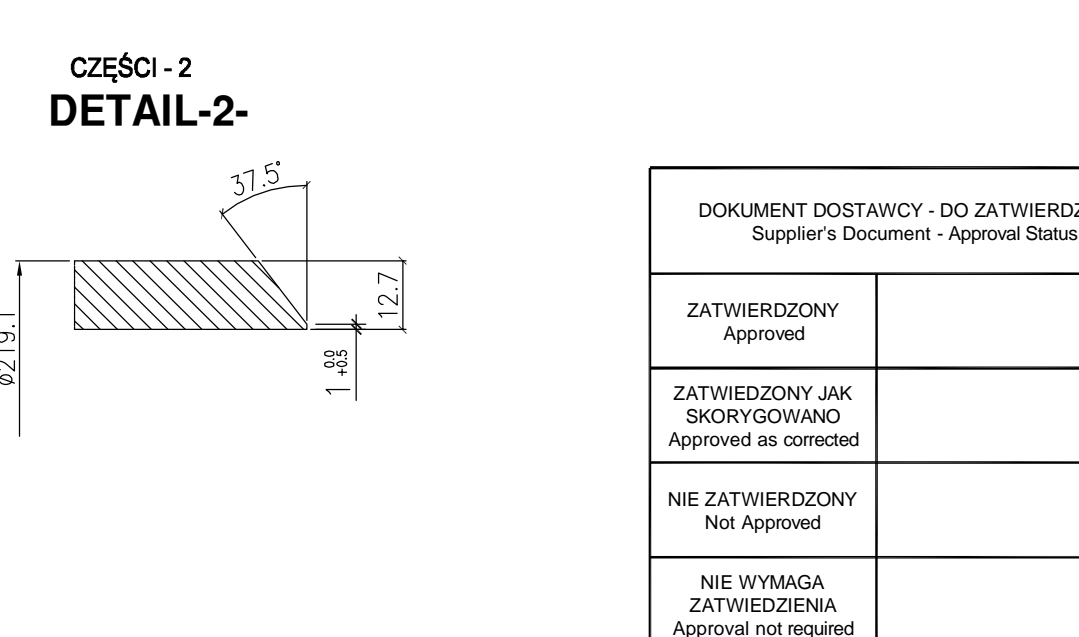
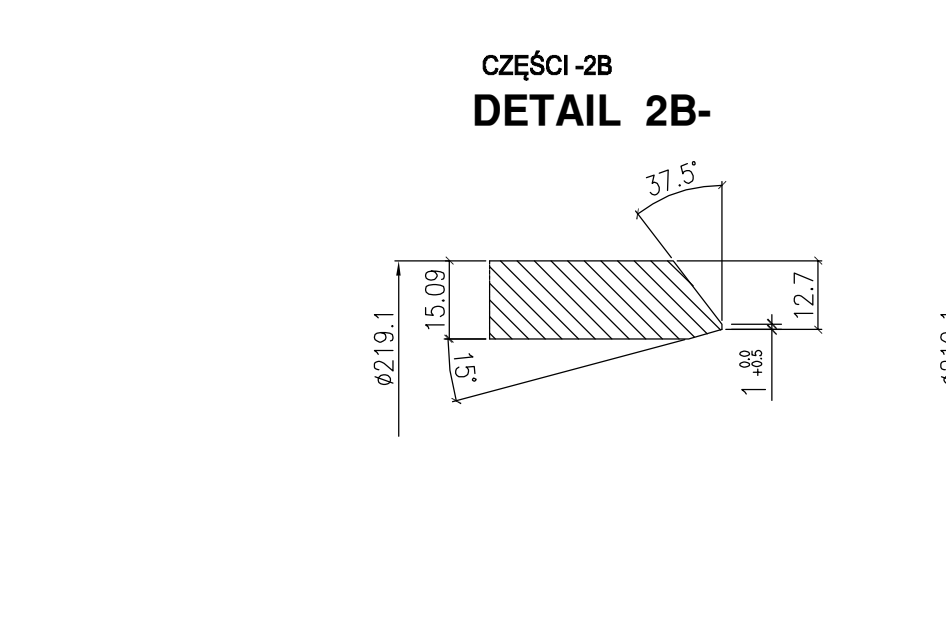
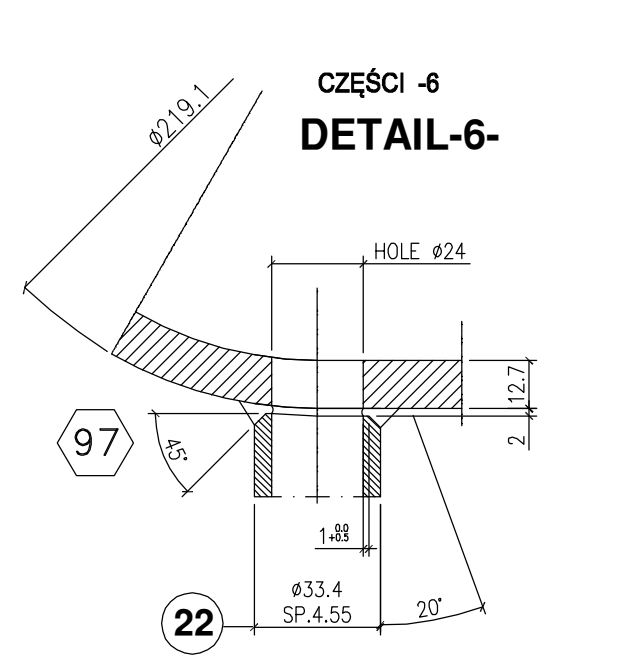
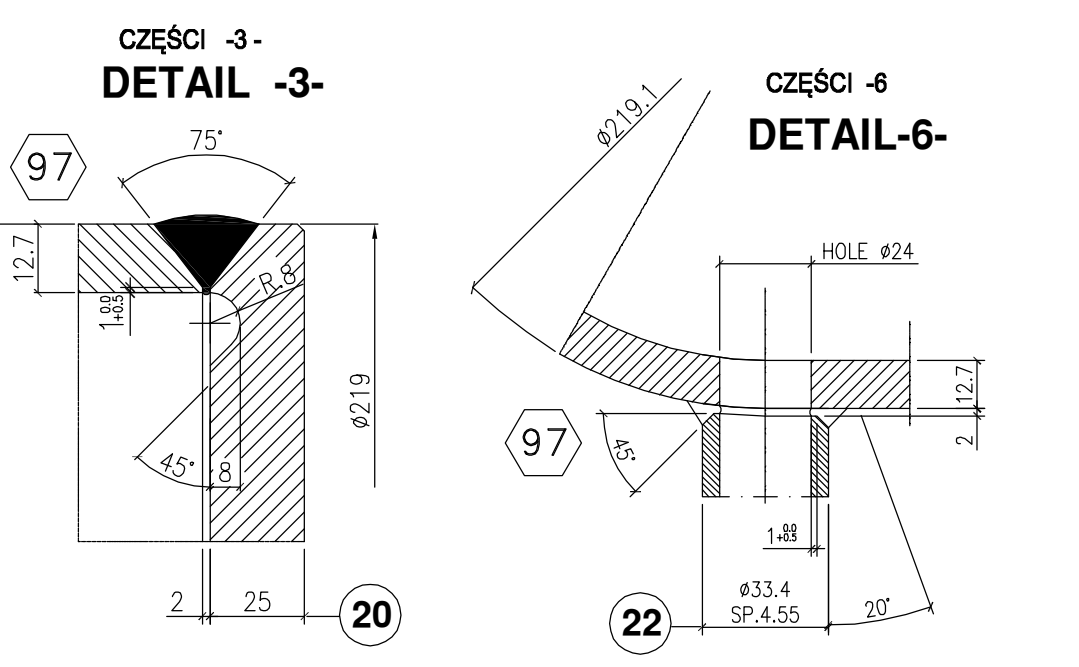
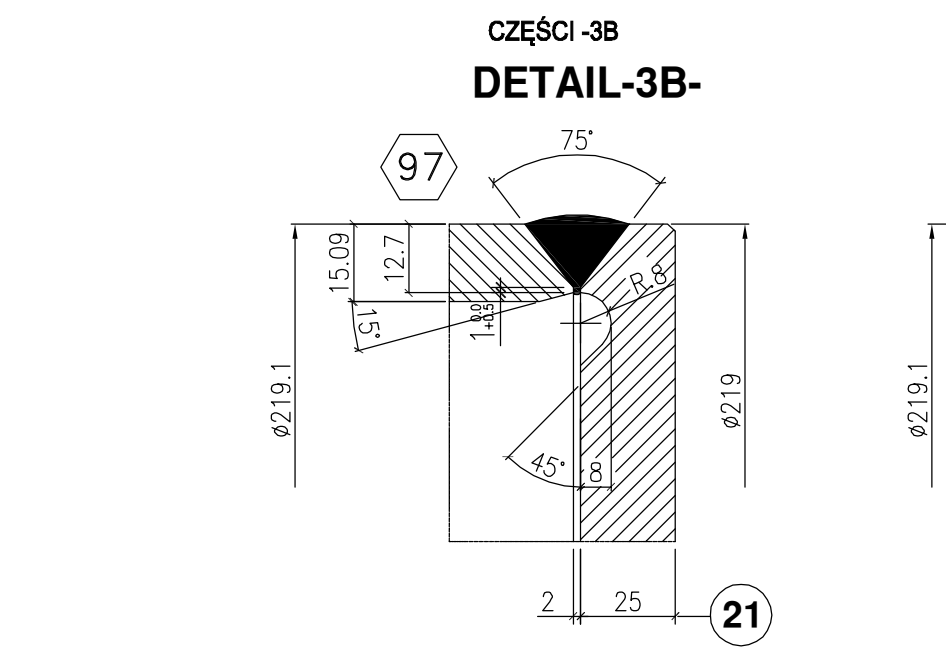
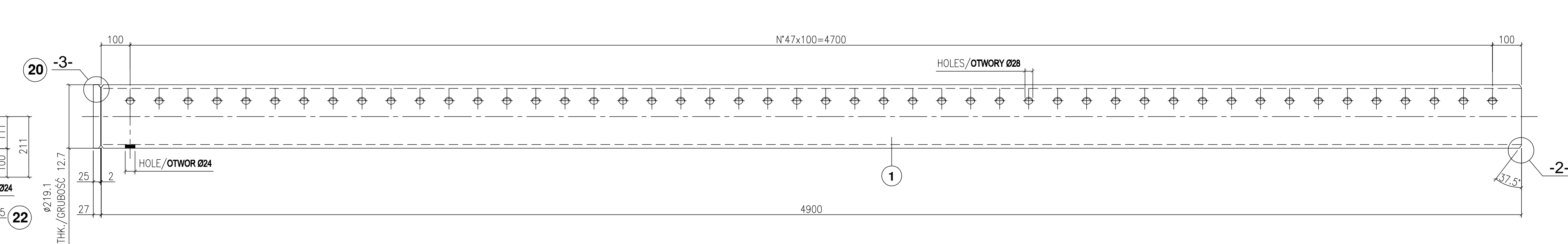


Table with 10 columns: Item, Qty, Description, Dia/Width, Height, Length, Thk., Material, Test, Weight, Notes. It lists various components like tubes, plates, and washers.

UWAGI/NOTES: Materials for main pressure parts with test certificate (type 3.1 EN10204). Dimensions in mm except where indicated.

Revision table with columns: REV., DATA, DESCRIZIONE, Description, DISC. Stamp, CONTR. VOTO QUAL. APPROV. APPROV. Includes project information like 13EB0131.

Project information table including client (SICES FENOTTI FIL), project name (ASSEMBLY AND DETAILS SH2 L2), and scale (1:20).

Approval and certification table with columns for project manager, designer, checker, and approver. Includes company name: Pr natura.

